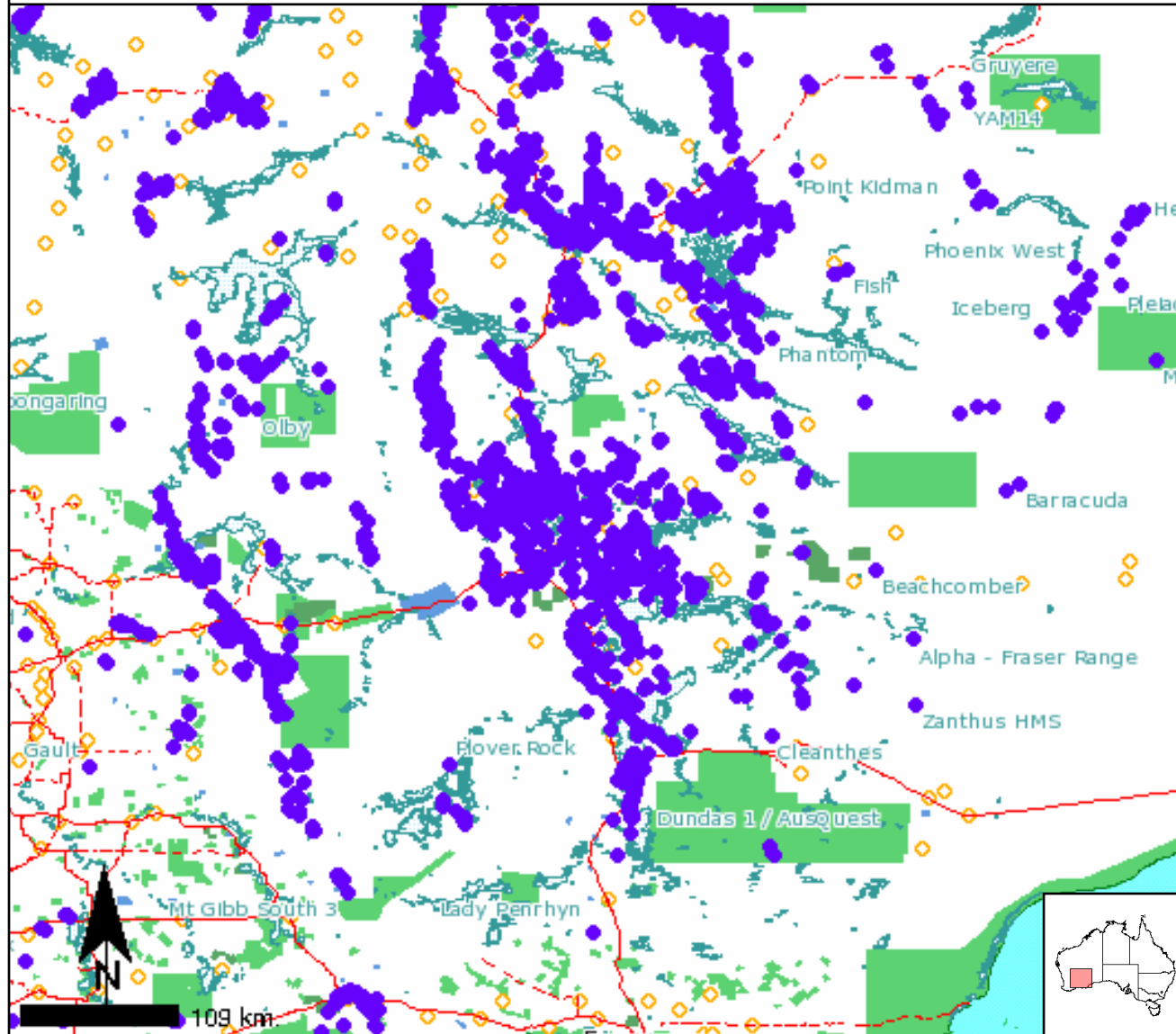


Kalgoorlie Gold occurrences



Legend

- Forestry Reserve
- Nature Conservation Reserve
- Water Supply Reserve
- Perennial
- Non-Perennial, Fluctuating
- Canal
- Perennial water bodies
- Non-perennial water bodies
- Other water bodies
- Minor road
- Secondary road
- Primary road
- Gold Occurrence

Coordinate System: Geocentric Datum of Australia 1994 (GDA94)

Map Centre: 30° 38' 45.3" S, 121° 35' 21.8" E

Other than content supplied by third parties, the Geoscience Australia logo, the Commonwealth Coat of Arms, and any material protected by a trade mark, Geoscience Australia has applied the Creative Commons Attribution 3.0 Australia licence.

Geoscience Australia asserts the right to be recognised as author of the original material in the following manner:



Commonwealth of Australia - Geoscience Australia (2010).

As far as practicable, material for which the copyright is owned by a third party will be clearly labelled.

Geoscience Australia has made all reasonable efforts to ensure that this material has been reproduced on this website with the full consent of the copyright owners.



Australian Government
Geoscience Australia

