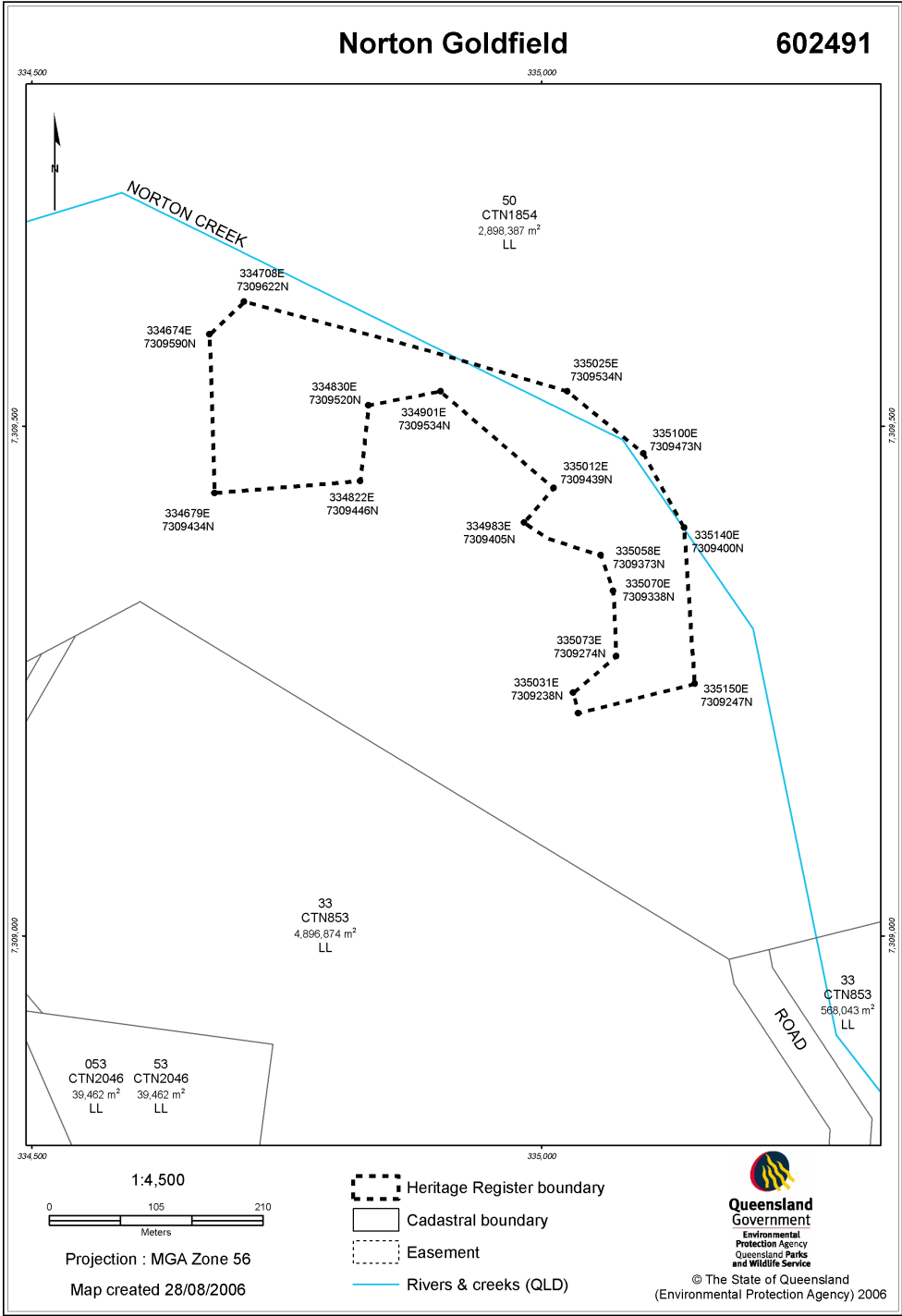




Heritage Register Boundary



QUEENSLAND HERITAGE ACT 1992

Entry in the Heritage Register

State Heritage



Process Statement: Pursuant to the provisions of the Queensland Heritage Act 1992, the Heritage Council has formed the opinion that this is a place of cultural significance which satisfies one or more of the criteria for provisional entry in the Heritage Register and that it is possible for the cultural heritage significance of the place to be conserved.

The decision of the Heritage Council is recorded in the minutes of the Council meeting of 26 May 2006.

An objection was received and an independent assessor was appointed to enquire into and report to the Queensland Heritage Council. At its meeting of 27 October 2006, the Heritage Council resolved to permanently enter the Norton Goldfield, Yarrowonga, Norton Road, via Nagoorin in the Queensland Heritage Register, in accordance with the recommendation of the assessor. The Heritage Council further resolved to remove the provisional entry of the area of land situated on Lot 50 on CTN1854 par Pemberton co Clinton from within the existing Heritage Register boundary at co-ordinates 334830E 7309520N; 334901E 7309534N; 335012E 7309439N; and 335058E 7309373N; 335070E 7309338N; 335073E 7309274N. The Heritage Council further resolved to provisionally enter the area of land situated on Lot 50 on CTN1854 par Pemberton co Clinton in the Heritage Register outside the existing Heritage Register boundary at co-ordinates 334822E 7309446N; 334679E 7309434N; 334674E 7309590N; 334708E 7309622N; 335025E 7309534N; 335100E 7309473N; 335140E 7309400N; 335150E 7309247N and 335031E 7309238N.

Note: This document has been prepared on the basis of current information, and assessed under the criteria in the Queensland Heritage Act. This document may be reassessed if further evidence becomes available. The statement of significance specifies the most important heritage values of the place. The purpose of this document is to provide an informed evaluation for heritage registration. This does not negate the need for a thorough conservation study by a qualified practitioner, or Cultural Heritage Branch consultation, before any action is taken which may affect the significance of the place.